

APPENDIX B
ENVIRONMENTAL INSPECTION SUMMARY



ENVIRONMENTAL HEALTH SERVICES, INC.

1195 Windsor Dr. • River Heights, Utah 84321 • (435) 760-1093

**City of Logan
Public Works Department**

**Emporium City Block Project
Commercial Buildings
55 North Main Street
Logan, Utah 84321**

To Whom It May Concern:

From Summer 2015 - Summer 2019, Ryan C. Bilbao and Steve Bilbao (Utah Inspector # ASB-4505 & ASB-0171) of Environmental Health Services Inc. (EHS), Utah Certification #017, completed a comprehensive environmental asbestos inspection in phases of the Logan City Emporium/City Block Project, located at/near 55 North Main Street, Logan, Utah, for the City of Logan. The inspection identified the existence, extent, and condition of asbestos-containing materials (ACM) associated with the structure's building materials.

Asbestos-containing materials (ACM) were identified to exist in the Emporium City Block structures. The extent of the ACM will be listed in the Environmental Asbestos Inspection Report. Consult with EHS for ACM scope of work questions and concerns. Abatement of the existing ACM will be necessary prior to demolition or disturbance of the outlined environmental materials.

Listed below is a summary of the asbestos-containing materials (ACM) associated with the Emporium City Block Structures:

Interior:

- Flooring Materials – Floor Tiles, Sheet Vinyl, Linoleum Flooring, Tar Paper, Floor Tile Sub Layer, Black Mastic Adhesives
- Sub Floor Tar/Felt Paper
- Window Glaze
- Tape/Tar Debris
- Boiler Unit & Associated TSI Materials
- Wall/Ceiling System – Joint Compound
- Thermal System Insulation (TSI) – Aircell Pipe Insulation & HVAC Duct Tape

Exterior:

- Roof Systems – Black Tar, Black & Silver Roofing Tar Sealant (Perimeter/Flashing/Seams/Fixtures/Penetrations)

Abatement Timeline: 5-8 Weeks

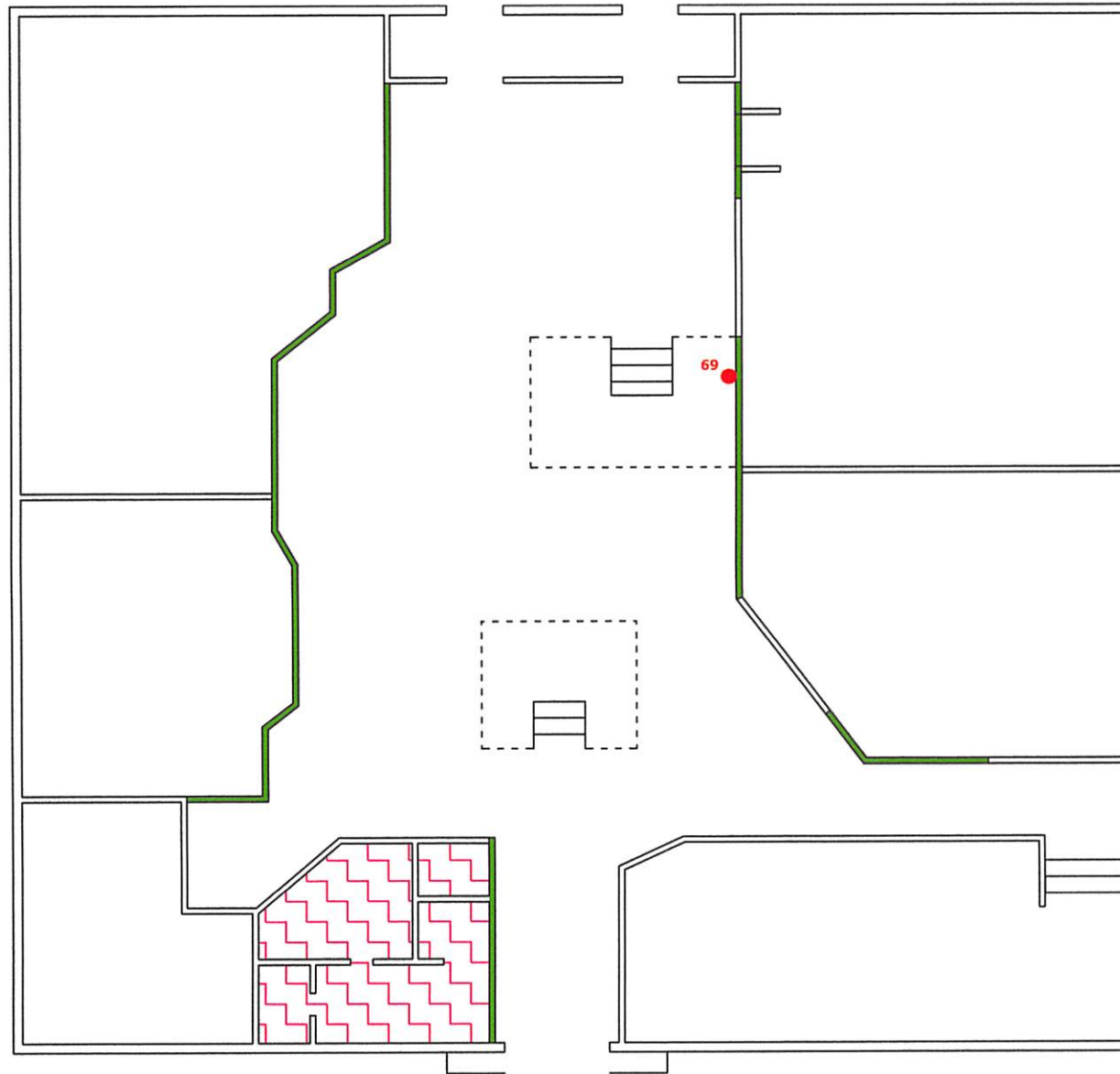
Verification sampling of some suspect ACM materials will be necessary regarding inaccessible areas and other building systems. The current scope of work is approximate, it is subject to change pending verification sampling. Should any unsampled suspect material appear during site mitigation, work will be stopped, and the suspect material will be verified through sampling by EHS or assumed as ACM.

Please contact EHS if any questions or concerns arise regarding environmental matters or the abatement scope of work. EHS - Steve Bilbao: 435-760-1093, Ryan C. Bilbao: 435-770-4851. Thank you.

Best Regards,

Ryan C. Bilbao
Environmental Health Services, Inc. (EHS)
rcb_ehs@yahoo.com
435-770-4851

Emporium Main Level



LEGEND

-  Asbestos Sample Location
-  Window Glaze - OSHA - 28 Units
-  Flooring System - Floor Tile - 1,210 Ft²



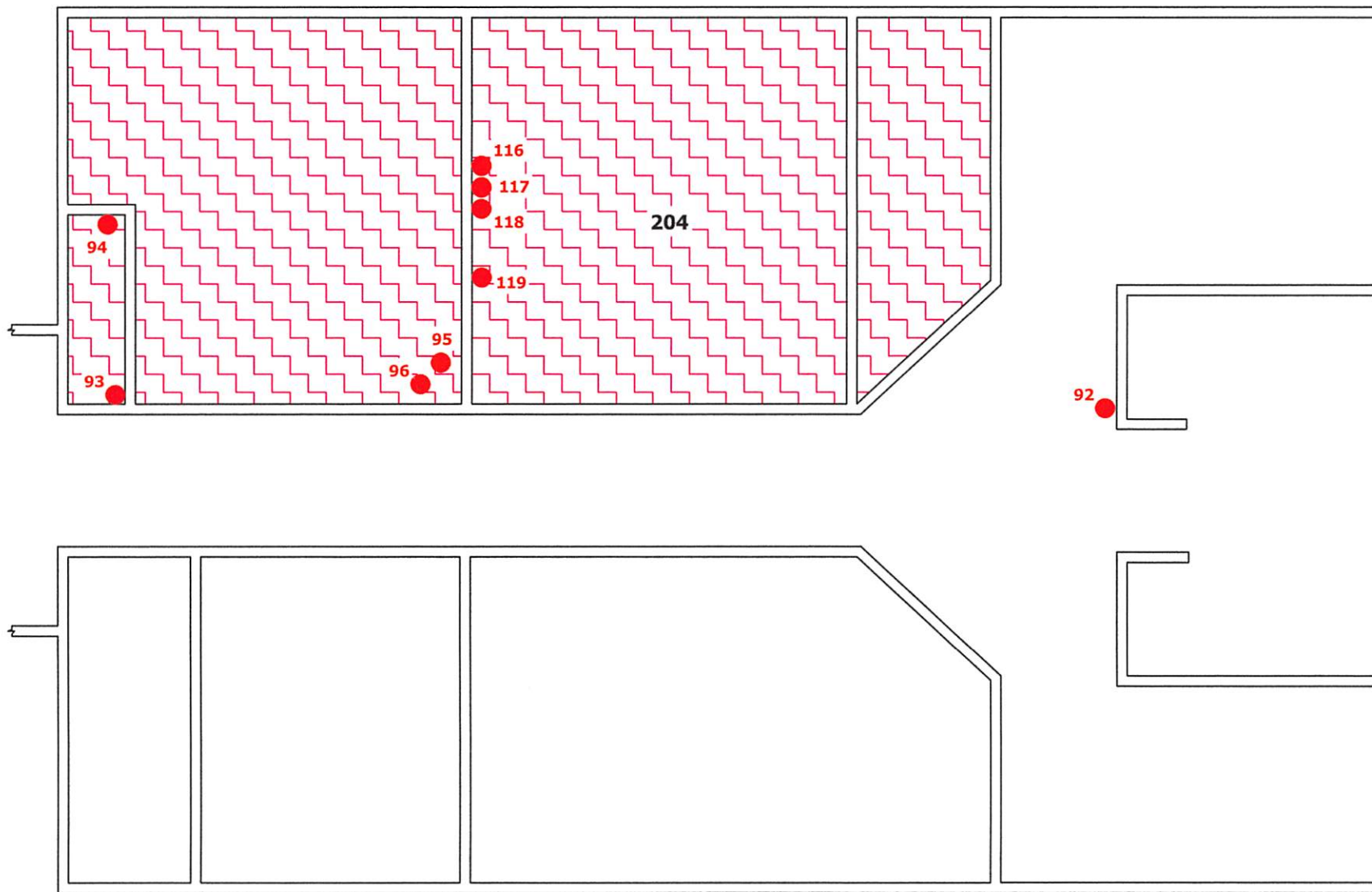
Environmental
Health
Services, Inc.

Emporium
55 North Main Street
Logan, UT 84321




Not to scale

January 16, 2019

Emporium Main Level - West Area



LEGEND

 Asbestos Sample Location	 Window Glaze - OSHA - 28 Units
 Flooring System - Floor Tile - 1,210 Ft ²	

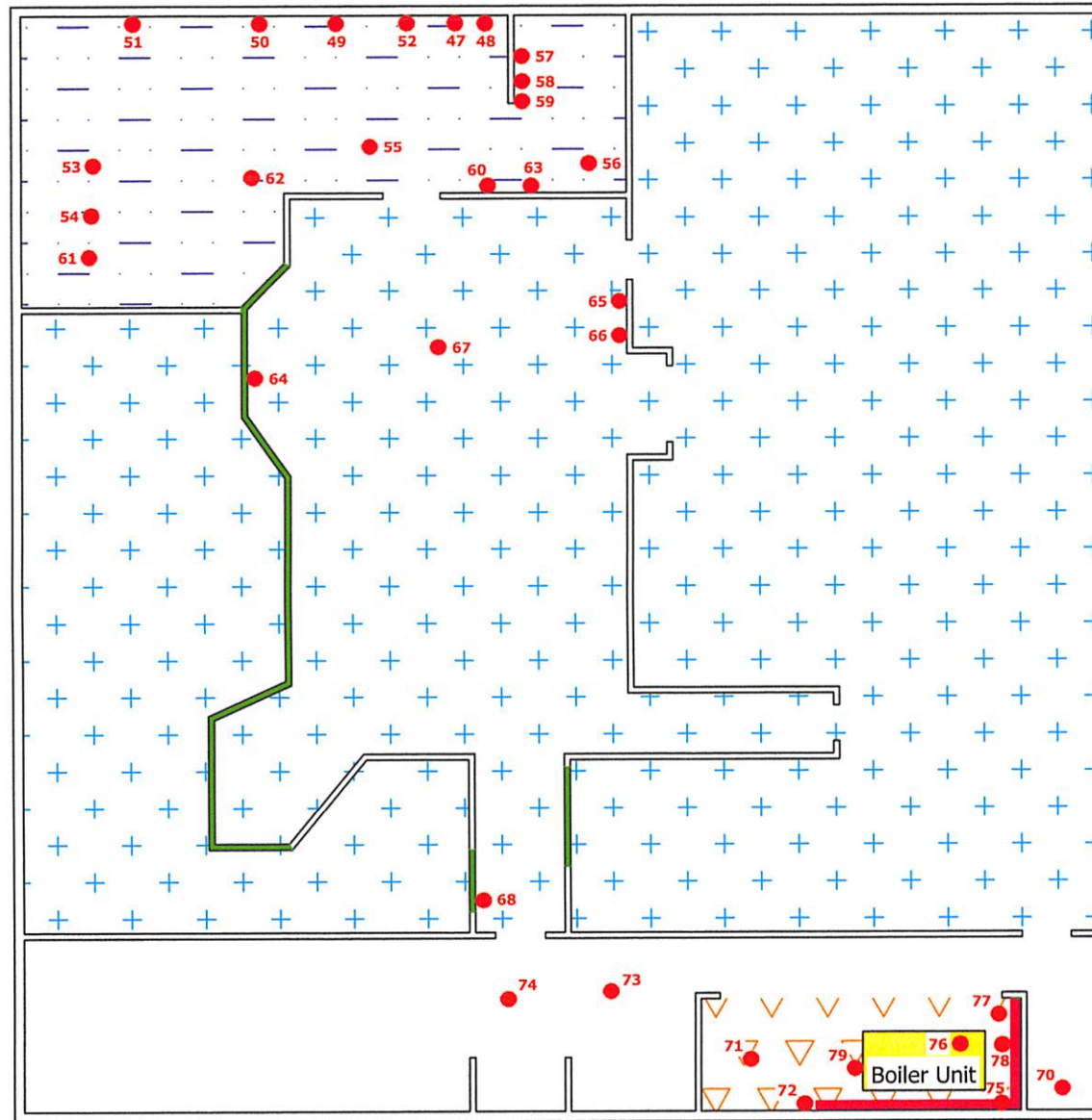


Environmental
Health
Services, Inc.

Emporium
55 North Main Street
Logan, UT 84321
Not to scale

January 16, 2019

Emporium Basement



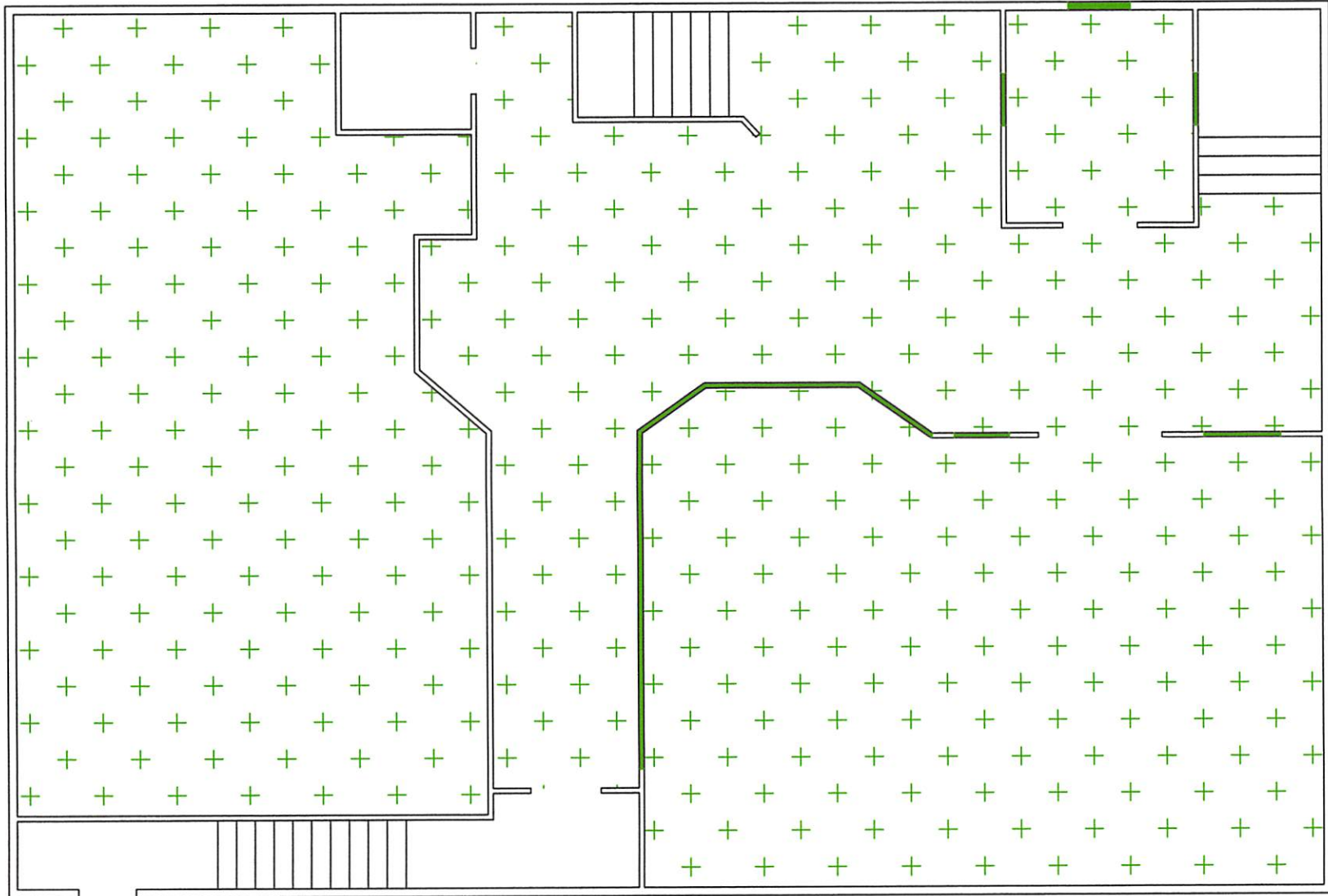
LEGEND

Asbestos Sample Location	Window Glaze - OSHA - 18 Units
Black Mastic - 7,662 Ft ²	Floor Tile/Mastic - 1,178 Ft ²
TSI Wall Packing - 130 Ft ²	Boiler Unit - Internal TSI Components - 1 Unit (4.5x4.5x3')
TSI Boiler Debris - 112 Ft ²	



Environmental Health Services, Inc.	Logan City Emporium 55 North Main street Logan, UT 84321
	Not to scale
	April 15, 2016

Emporium 2nd Floor



LEGEND

● Asbestos Sample Location

⊕ Flooring System - Floor Tile, Mastic Liner, Tar Paper, Linoleum - 2,520 Ft²

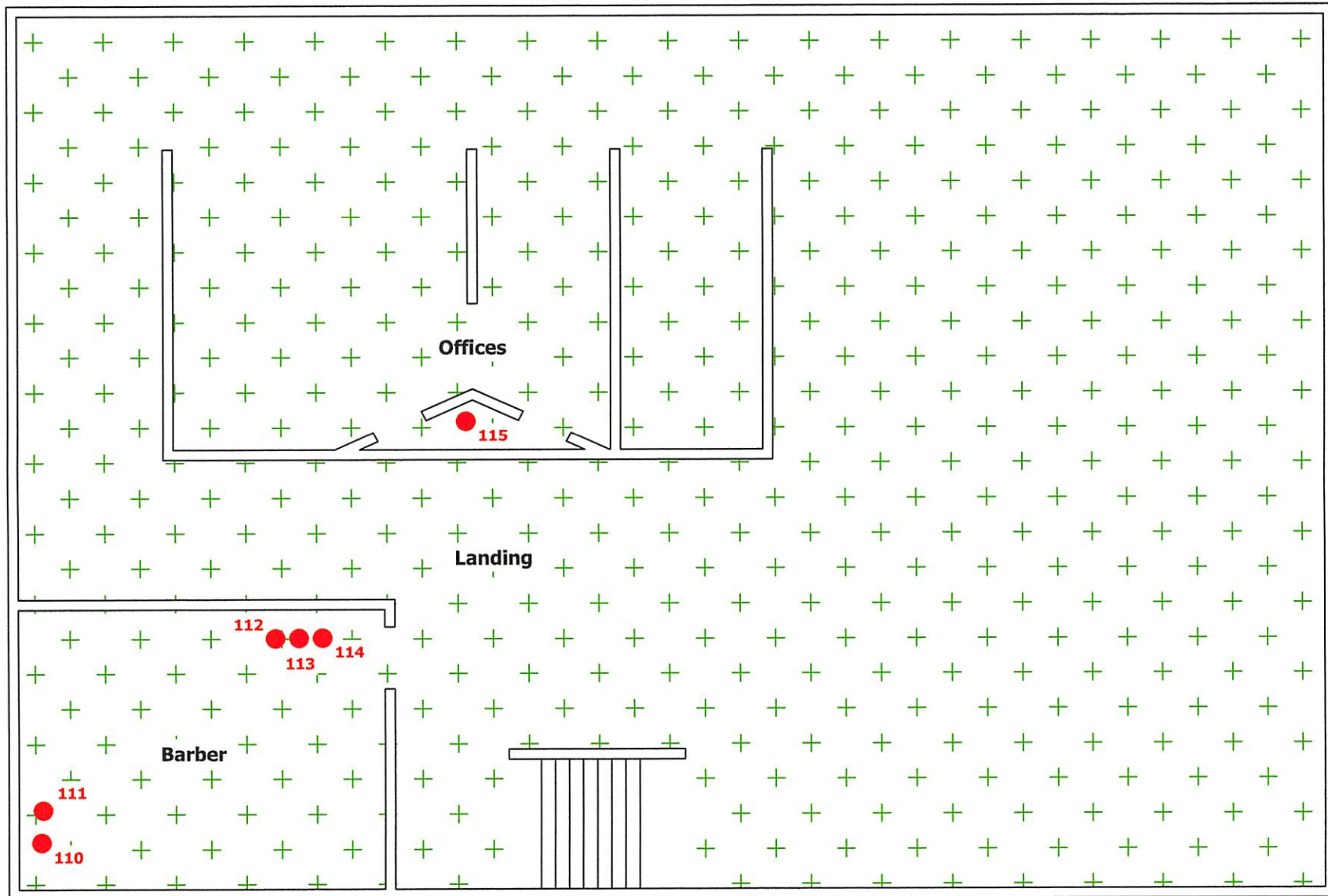


Environmental
Health
Services, Inc.

Emporium
55 North Main Street
Logan, UT 84321
Not to scale

January 16, 2019

Emporium Second Floor



LEGEND

● Asbestos Sample Location

⊕ Flooring System - Floor Tile, Mastic Liner, Tar Paper, Linoleum - 2,520 Ft²



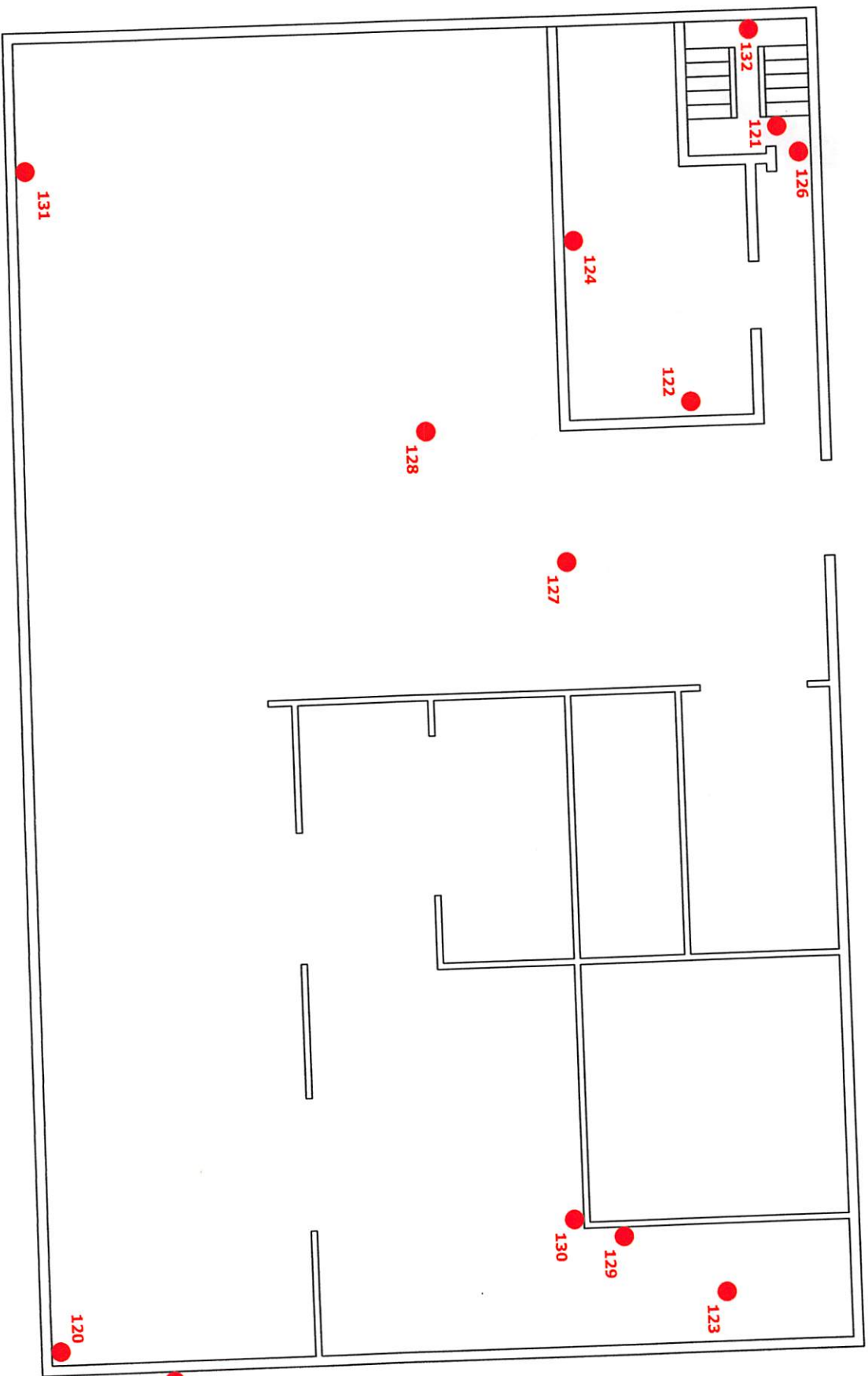
Environmental
Health
Services, Inc.

Emporium
55 North Main Street
Logan, UT 84321

Not to scale

January 16, 2019

Emporium Second Level - South Wing (SW)



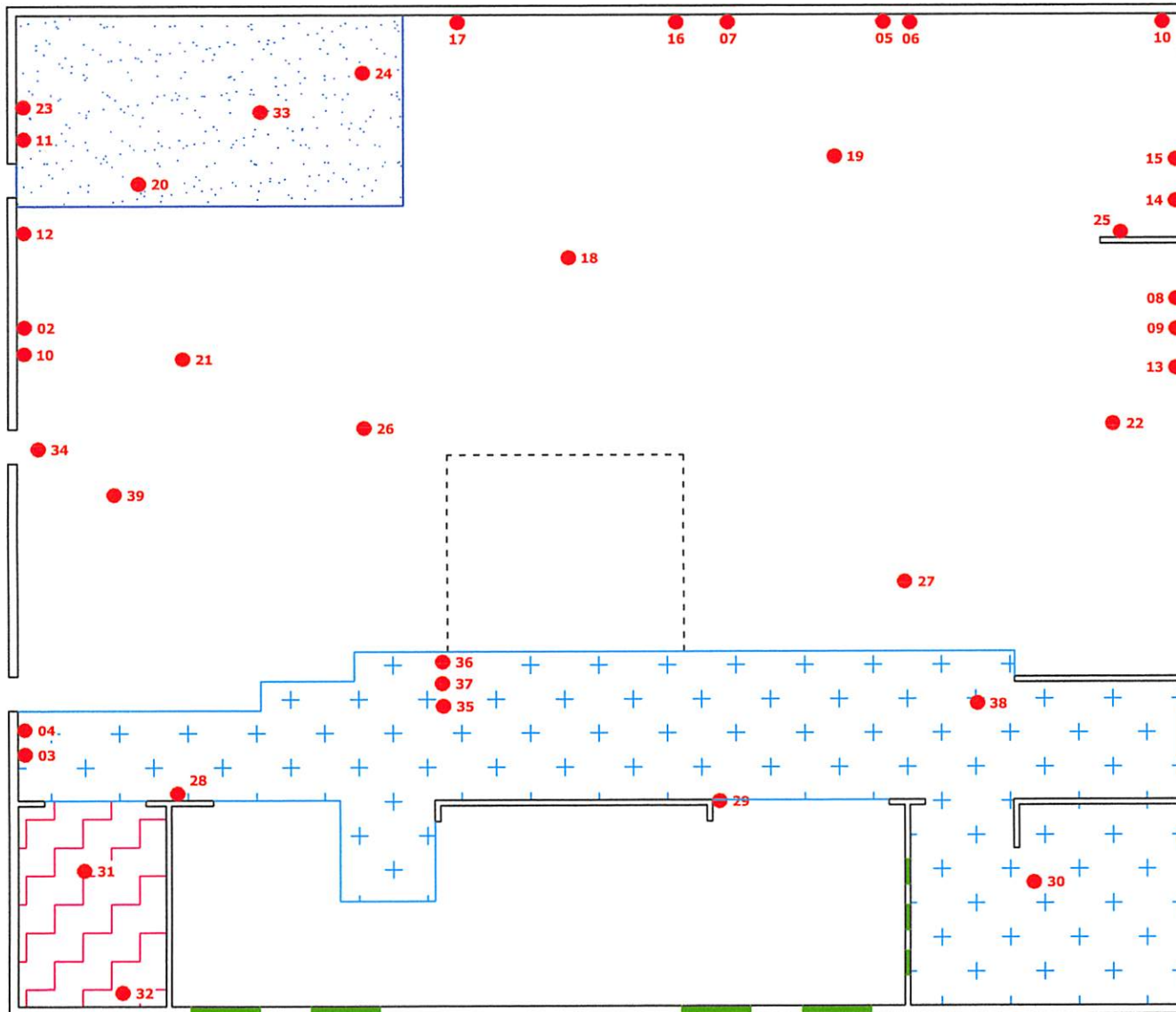
● Asbestos Sample Location

LEGEND



Environmental Health Services, Inc.	Emporium 55 North Main Street Logan, UT 84321
	Not to scale
	July 18, 2018

Emporium 3rd Floor



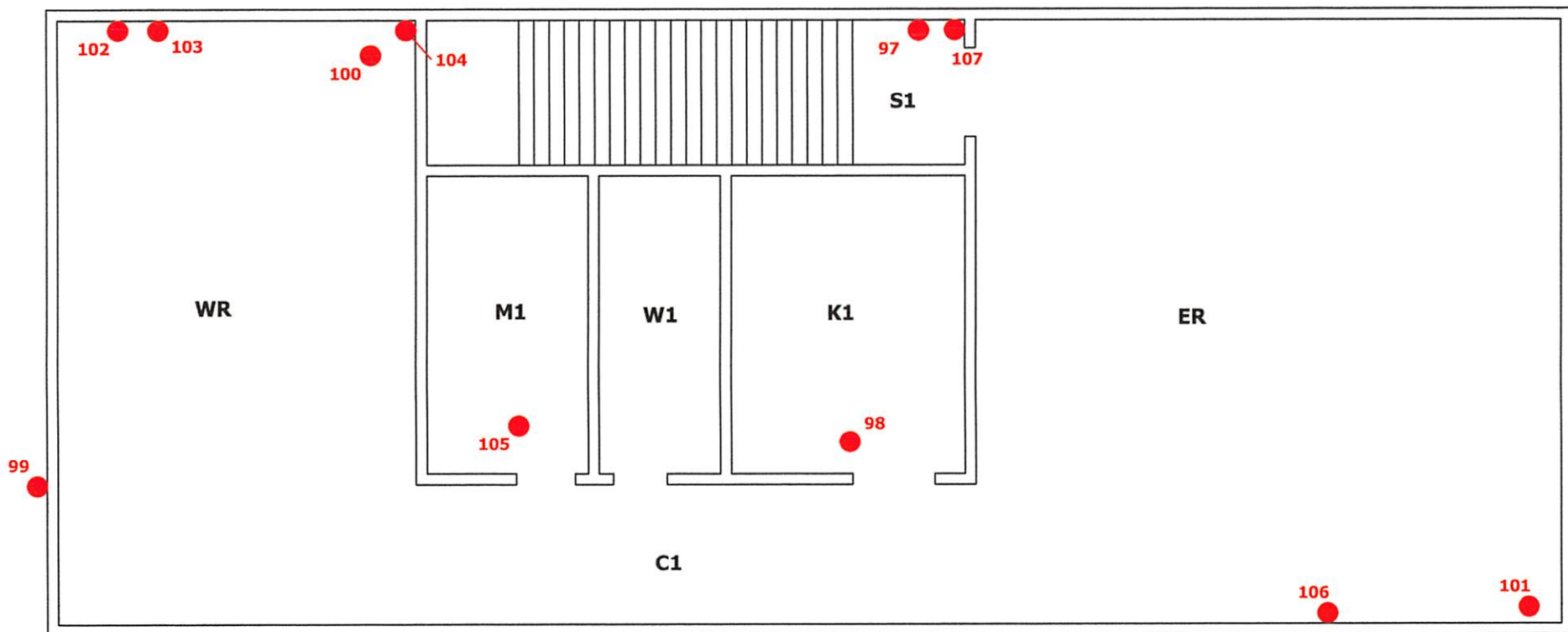
LEGEND

Asbestos Sample Location	Window Glaze - OSHA - 7 Units
Black Mastic - 1,125 Ft ²	Sheet Vinyl - OSHA - 94 Ft ²
Tar Paper - OSHA - 328 Ft ²	



Environmental Health Services, Inc.	Logan City Emporium 55 North Main street Logan, UT 84321
	Not to scale
	April 15, 2016

Emporium North Wing - Third Floor



LEGEND

● Asbestos Sample Location



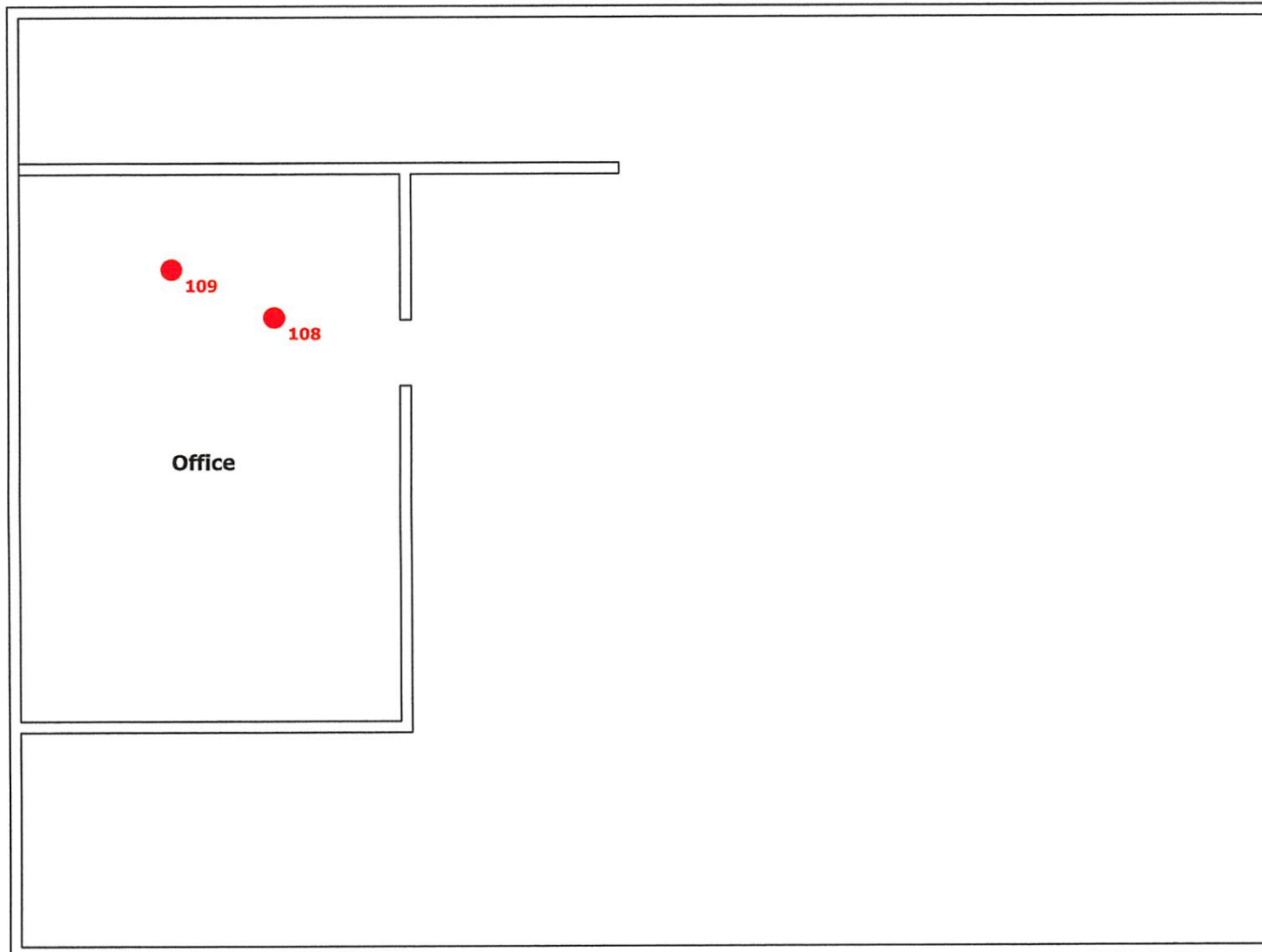
Environmental
Health
Services, Inc.

Emporium
55 North Main Street
Logan, UT 84321

Not to scale

July 18, 2018

Emporium Third Floor - West Area



LEGEND

● Asbestos Sample Location



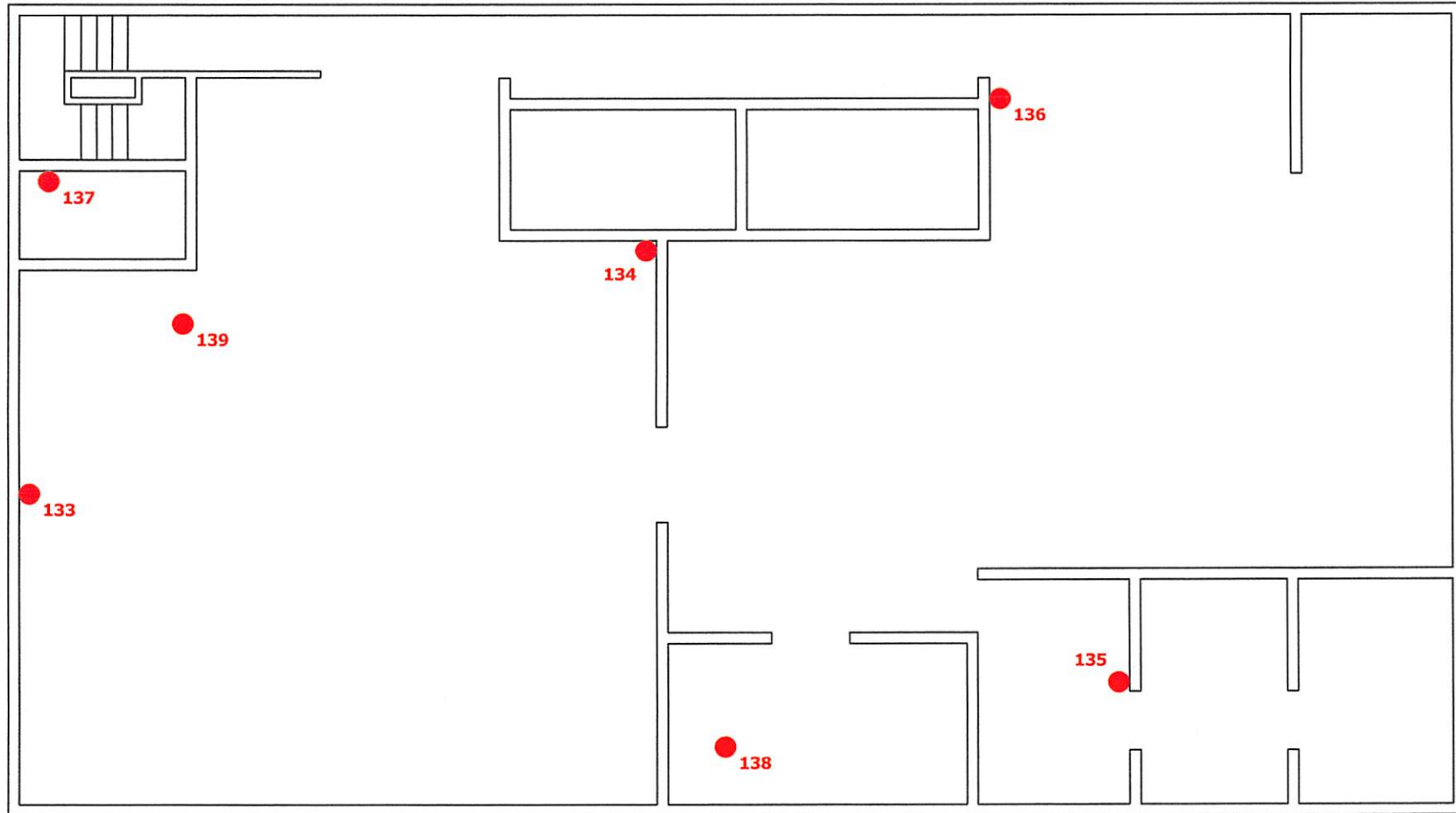
Environmental
Health
Services, Inc.

Emporium
55 North Main Street
Logan, UT 84321

Not to scale

July 18, 2018

Emporium Third Floor - South Wing (SW)



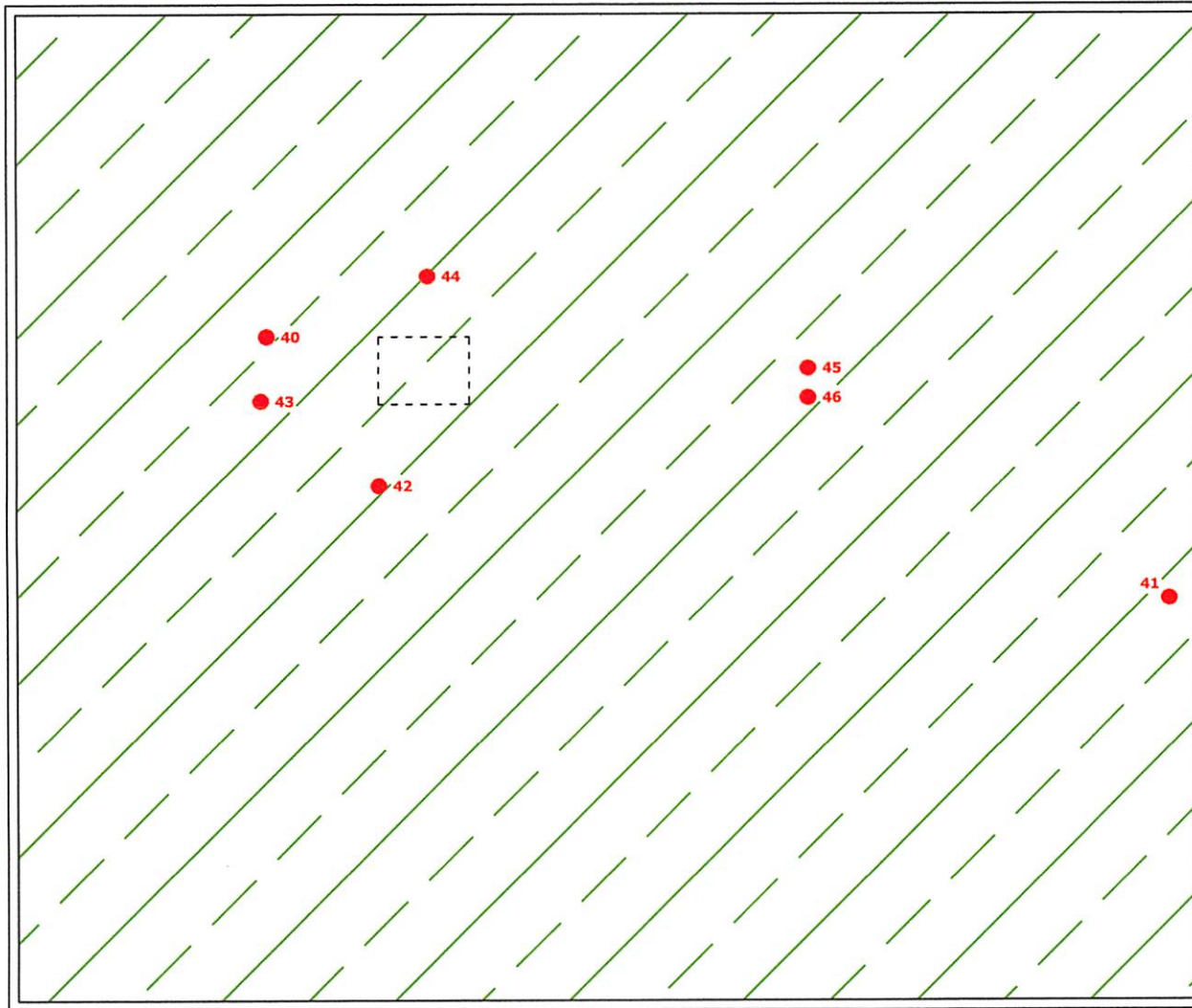
LEGEND

● Asbestos Sample Location



Environmental Health Services, Inc.	Emporium 55 North Main Street Logan, UT 84321
	Not to scale
	July 18, 2018

Emporium Attic



LEGEND



Asbestos Sample Location



Attic Tape/Duct Tape Adhesive
- 85 Linear Feet



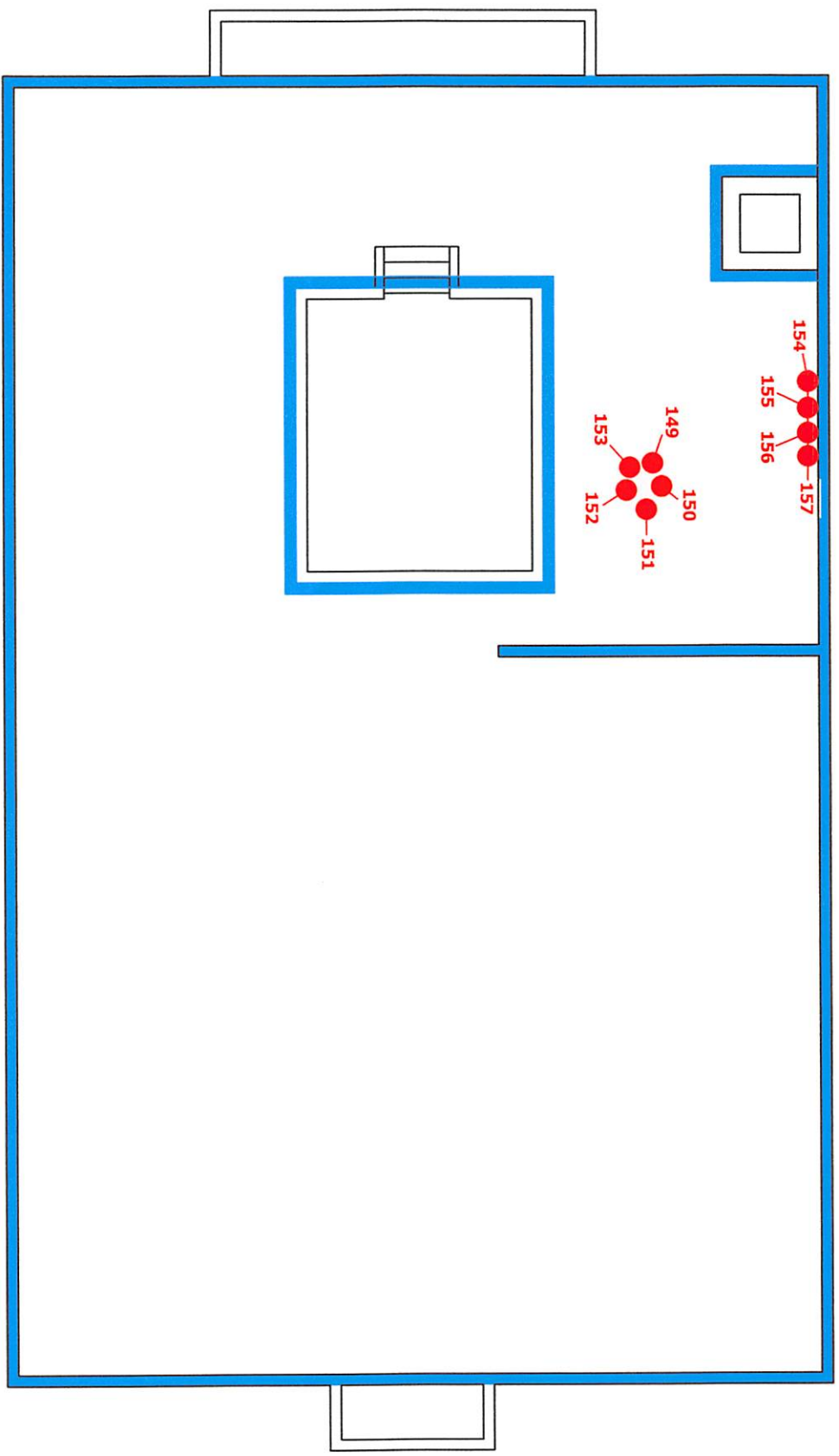
Environmental
Health
Services, Inc.

Logan City Emporium
55 North Main street
Logan, UT 84321

Not to scale

April 15, 2016

Emporium Roof

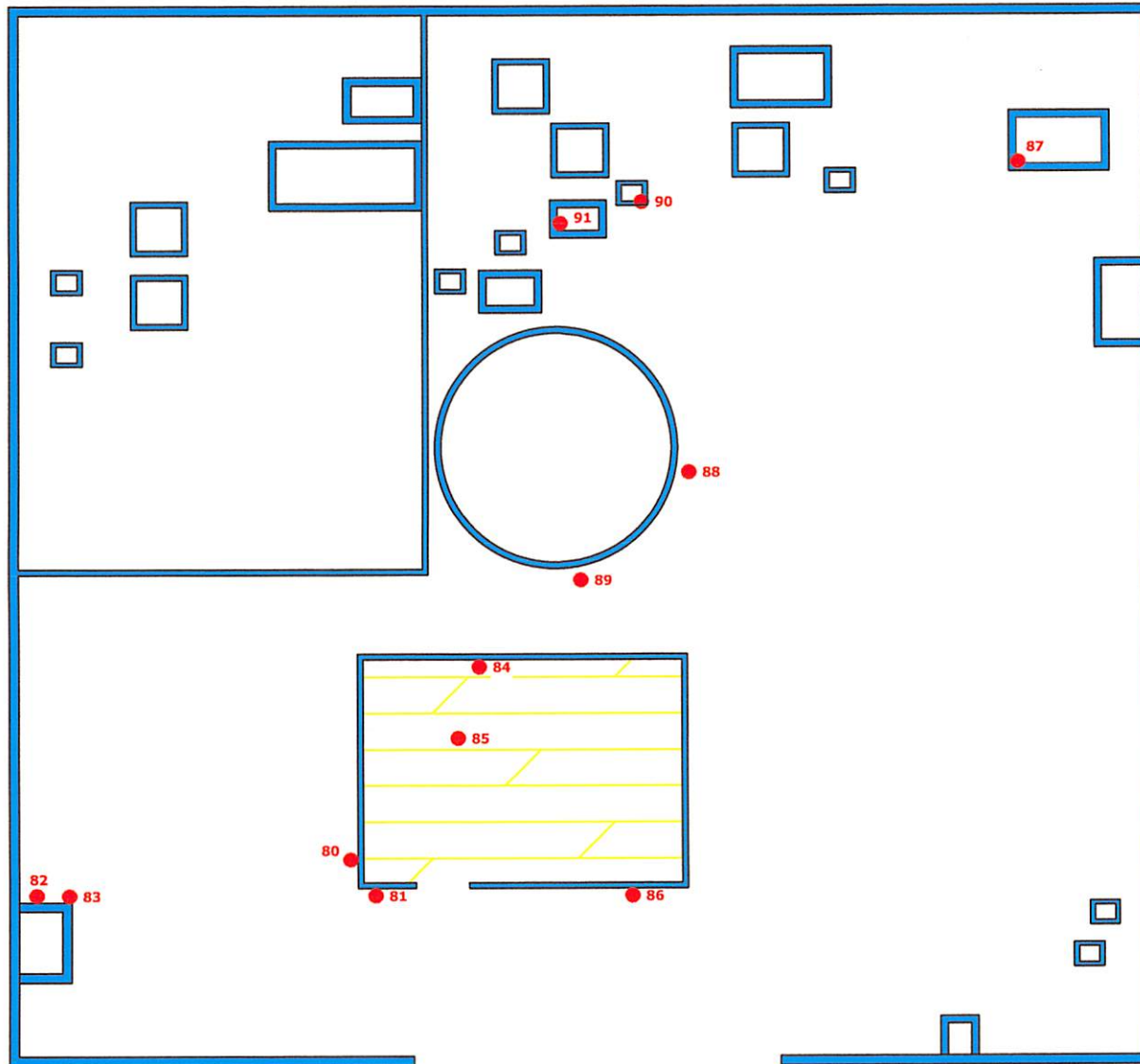


LEGEND

- Asbestos Sample Location
- Roofing System - Black Tar and Sealant - Parapet, Seams, Perimeter, Fixtures - 910 Linear Feet (Total)



Emporium Roof



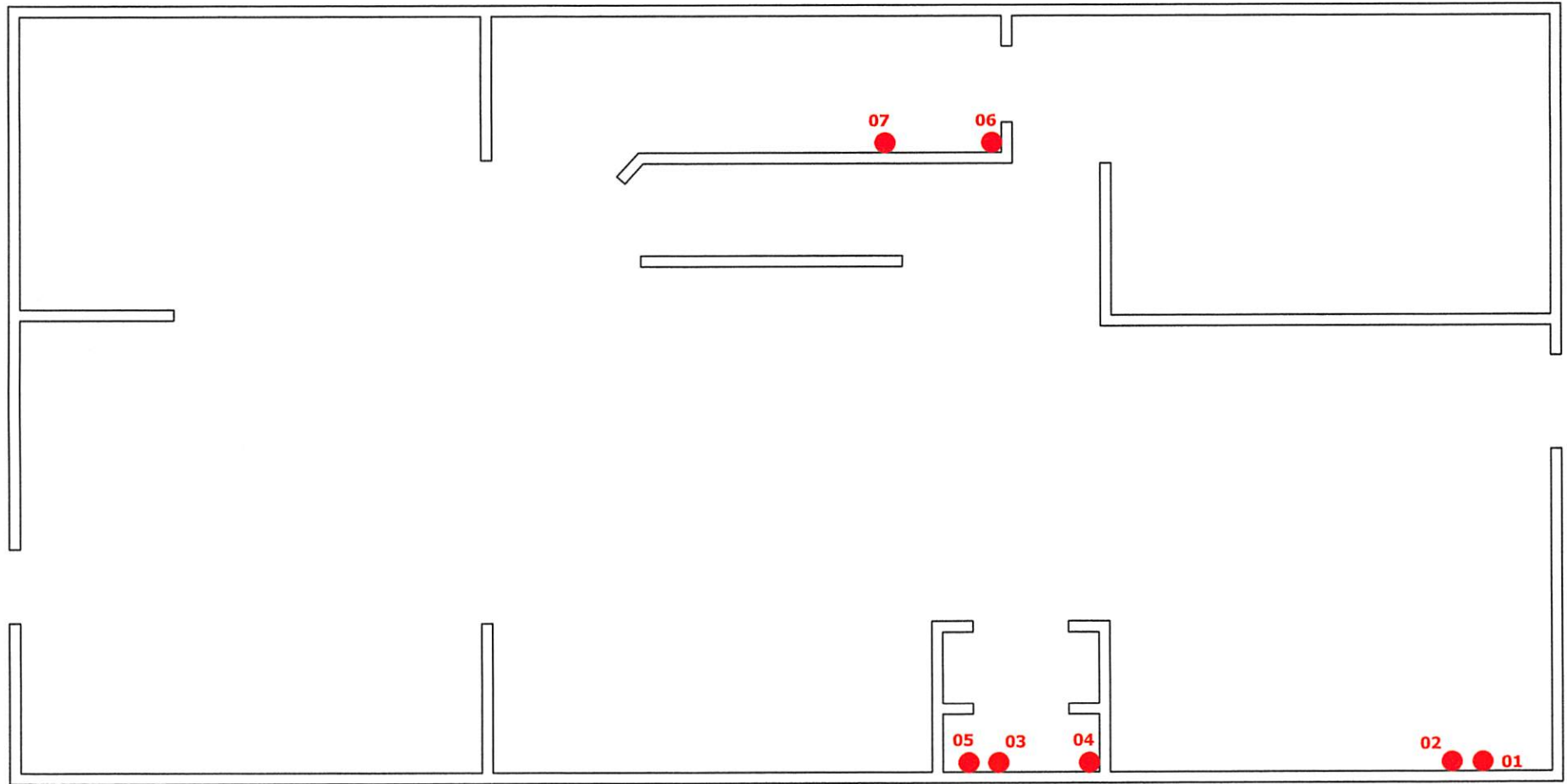
LEGEND

- Asbestos Sample Location
- Roof Tar Sealants - Penetrations, Parapet, Perimeter - Black, Flat Black, Silver - 910 Linear Feet
- Air Handler/Duct Sealant - Grey/Silver - 80 Linear Feet



Environmental Health Services, Inc.	Logan City Emporium 55 North Main street Logan, UT 84321
	Not to scale
	April 15, 2016

Lifestyle - Main Level



LEGEND

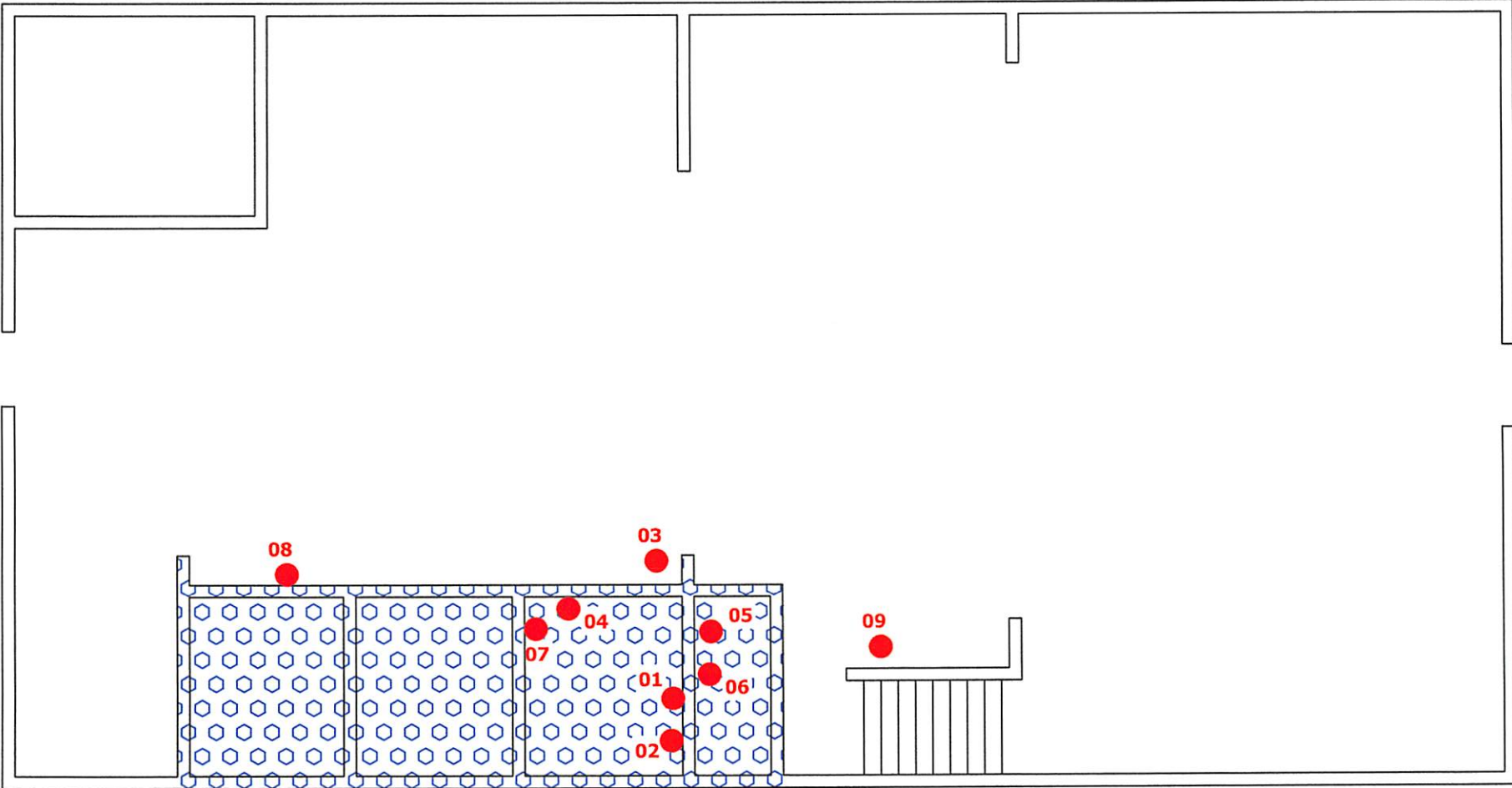
● Asbestos Sample Location

Environmental
Health
Services, Inc.

Plaza 45 - Lifestyle
55 North Main Street
Logan, UT 84321
Not to scale

January 16, 2019

Sego - Main Level

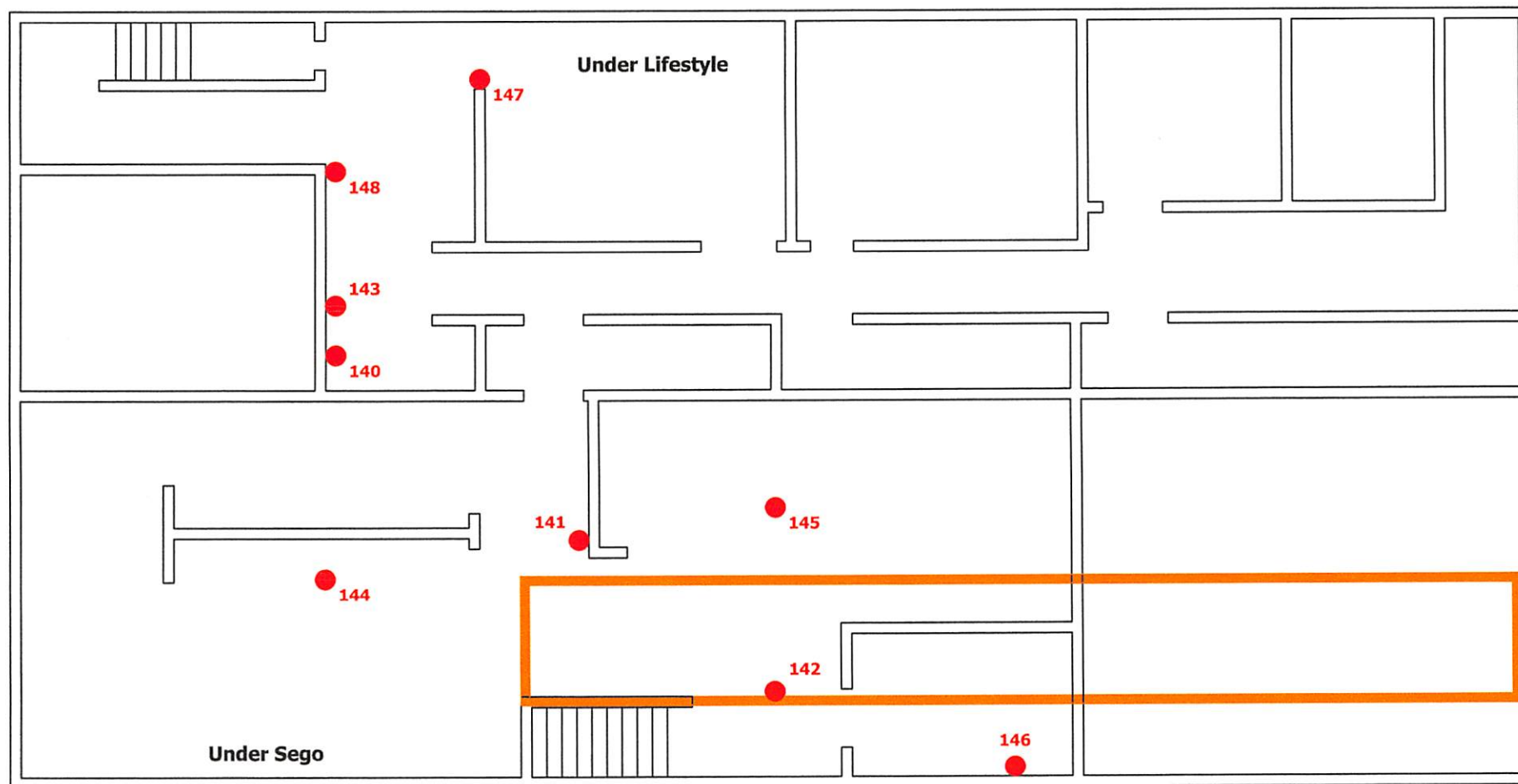


LEGEND	
 Asbestos Sample Location	 Wall/Ceiling System - Joint Compound - 1,688 Ft ²



Environmental Health Services, Inc.	Plaza 45 - Sego 55 North Main Street Logan, UT 84321
	Not to scale
	January 16, 2019

Plaza 45 Lower Level - South Wing (SW)



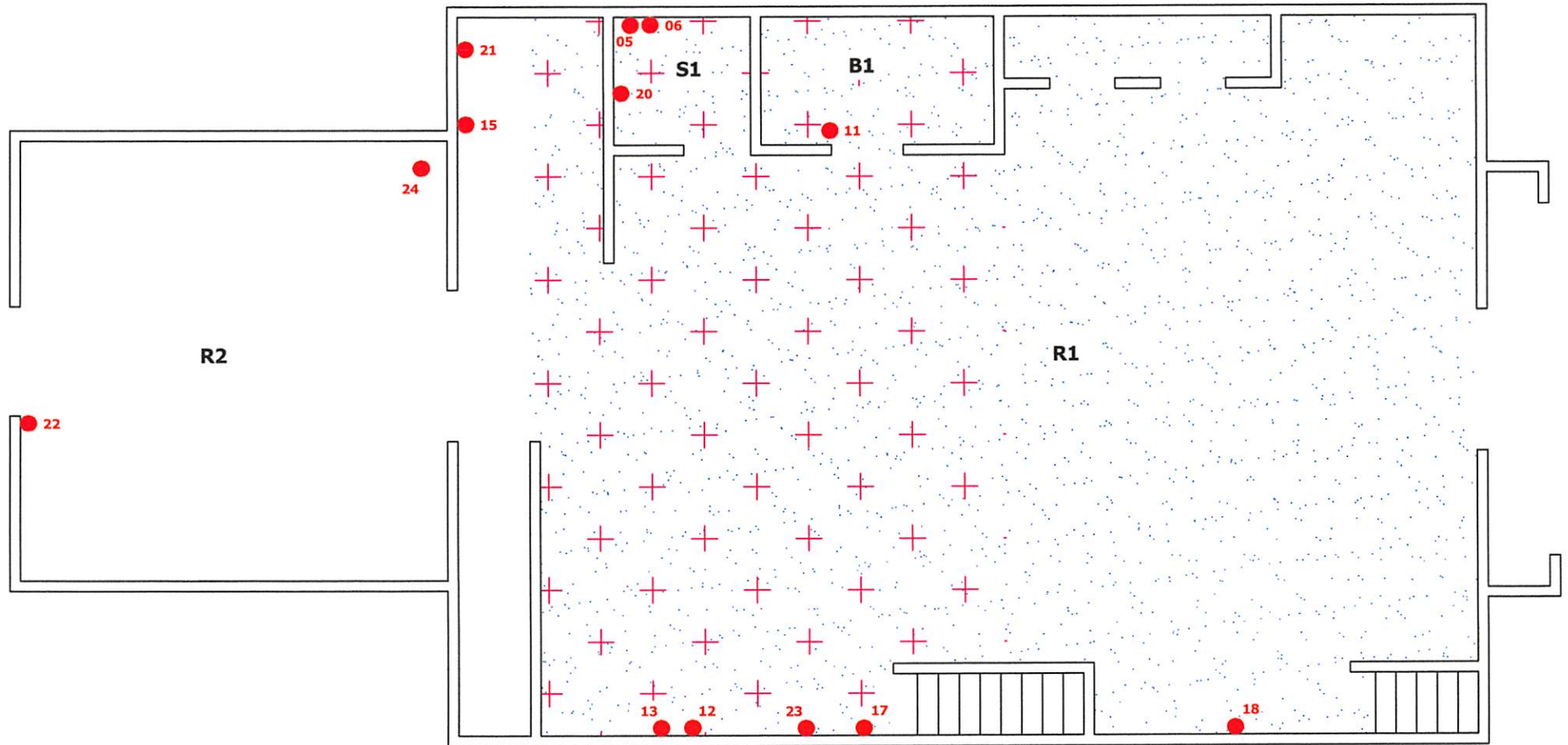
LEGEND

- Asbestos Sample Location
- TSI - Aircell Pipe insulation - 65 Linear Feet



Environmental Health Services, Inc.	Plaza 45
	55 North Main Street Logan, UT 84321
	Not to scale
January 16, 2019	

Poco Loco - Main Level



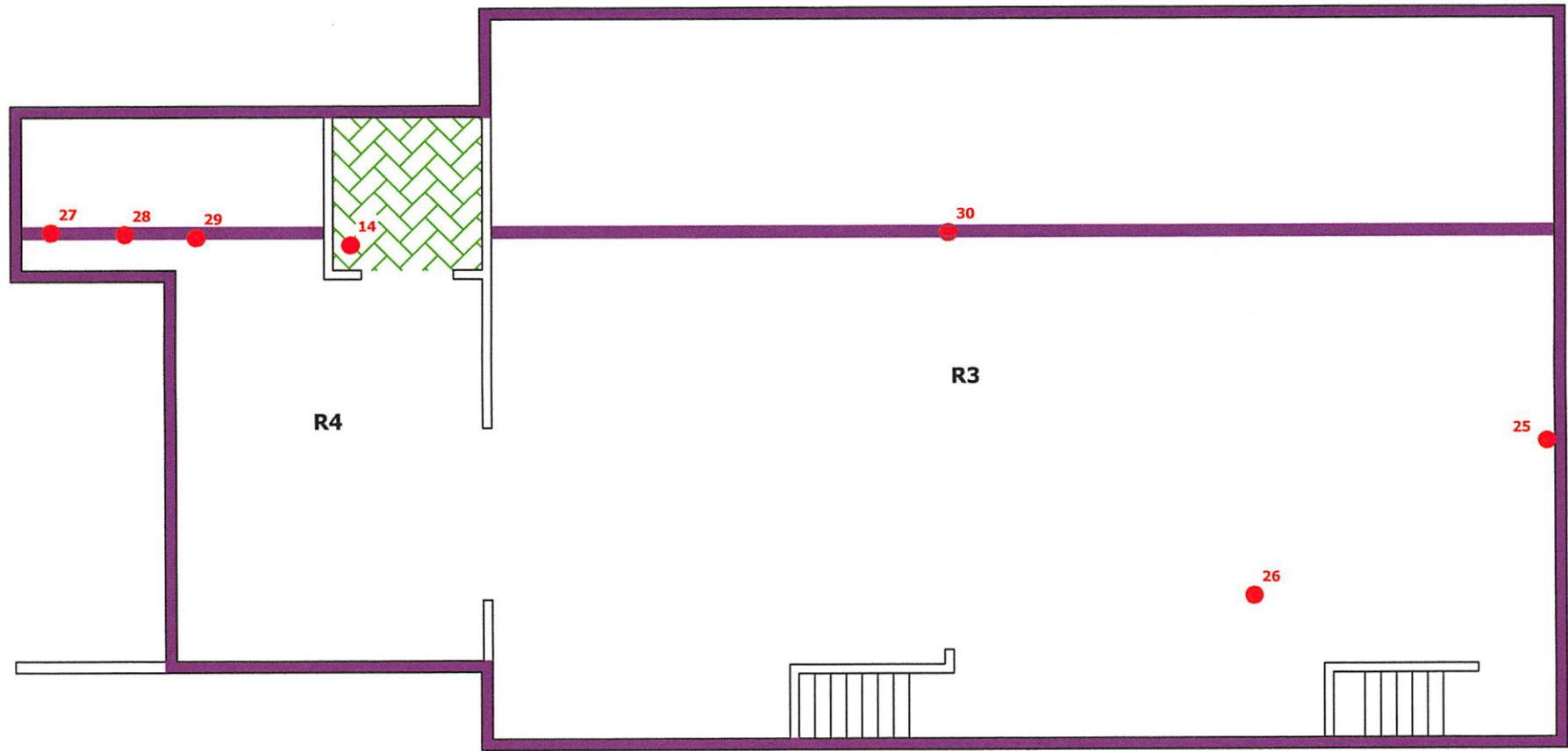
LEGEND

- Asbestos Sample Location
- + Floor Tile and Mastic Liner/Tar Paper - 460 Ft²
- Sub Floor Tar Paper (OSHA) - 1,386 Ft²



Environmental Health Services, Inc.	Poco Loco 67 North Main Logan, UT 84321
	Not to scale
	January 16, 2019

Poco Loco - Lower Level



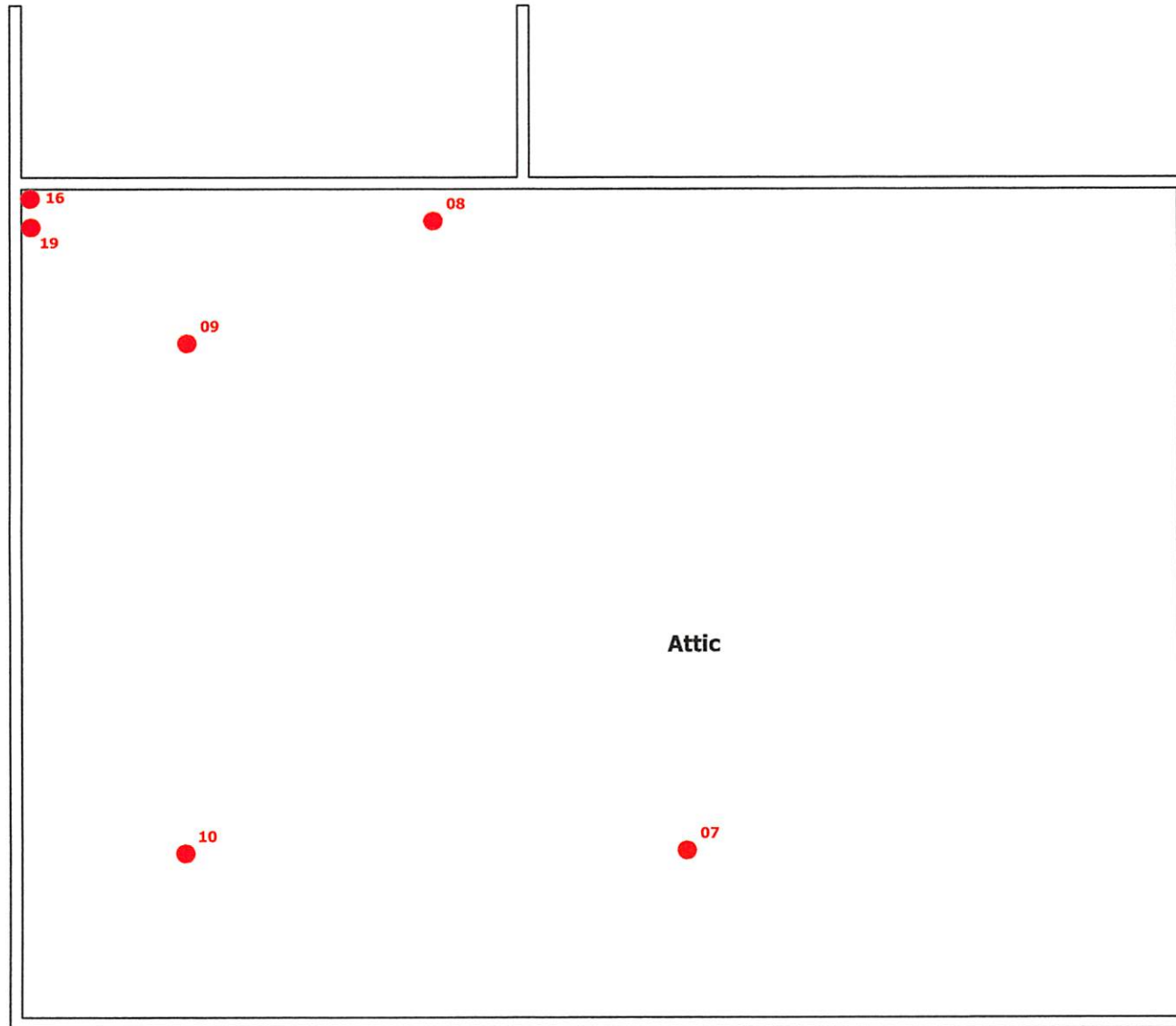
LEGEND

- Asbestos Sample Location
- Sub Floor Tar Paper (OSHA) - 1,386 Ft²
- TSI - Alrcell Pipe Insulation - MPF Residential - 85 Linear Feet



Environmental Health Services, Inc.	Poco Loco 67 North Main Logan, UT 84321
	Not to scale
	January 16, 2019

Poco Loco - Attic



Attic



LEGEND

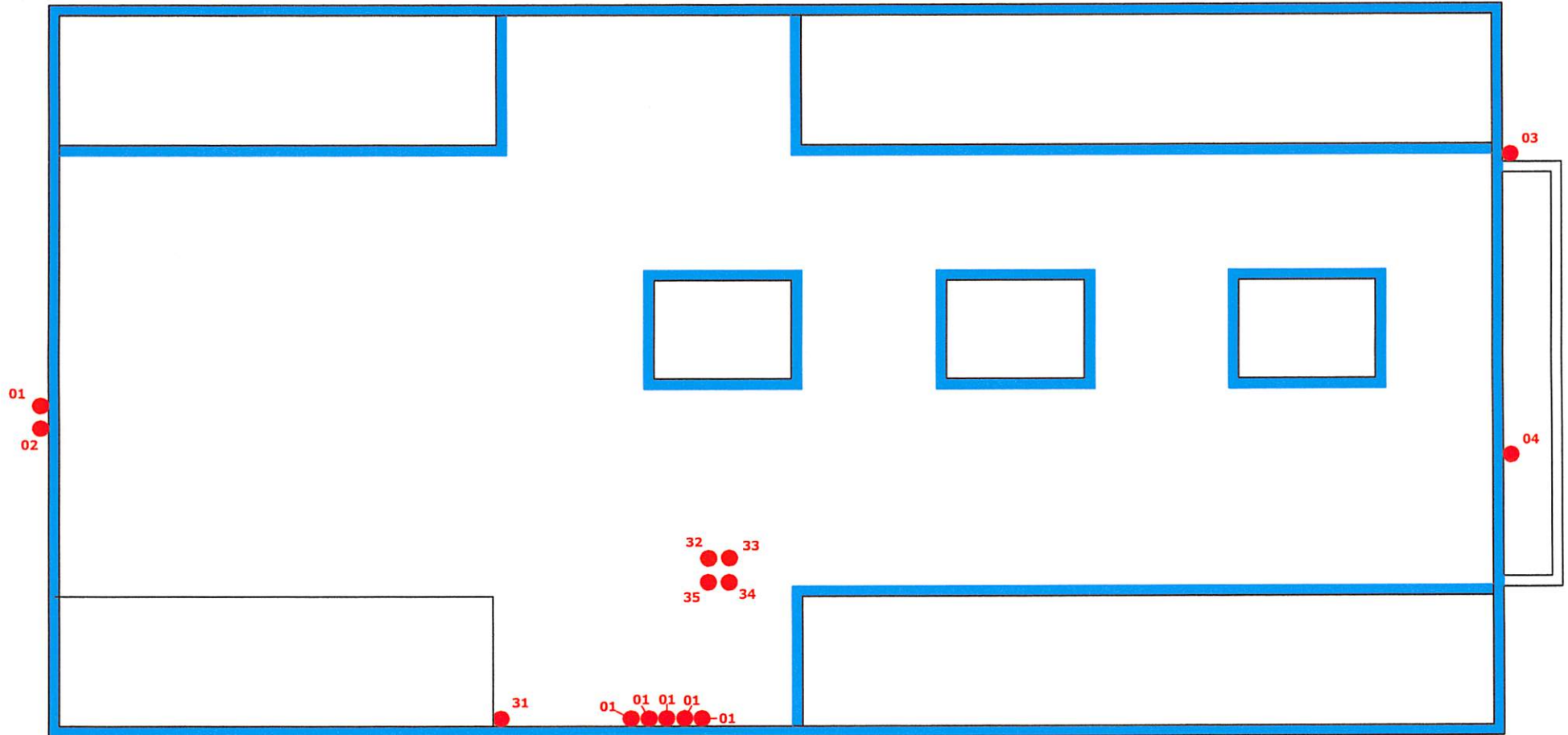
● Asbestos Sample Location

Environmental
Health
Services, Inc.

Poco Loco
67 North Main
Logan, UT 84321
Not to scale

January 16, 2019

Poco Loco - Roof and Exterior



LEGEND

- Asbestos Sample Location
- Roofing System - Black Tar and Sealant - Parapet, Seams, Perimeter, Fixtures - 435 FT² (Total)



Environmental Health Services, Inc.	Poco Loco 67 North Main Logan, UT 84321
	Not to scale
	January 16, 2019